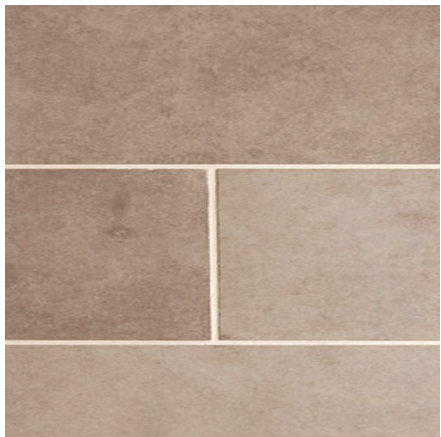


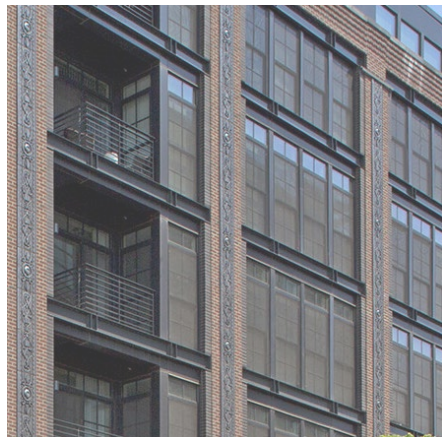
1. CAST STONE - TYPE A



2. CAST STONE - TYPE B W/ REVEAL



3. STONE - TYPE C

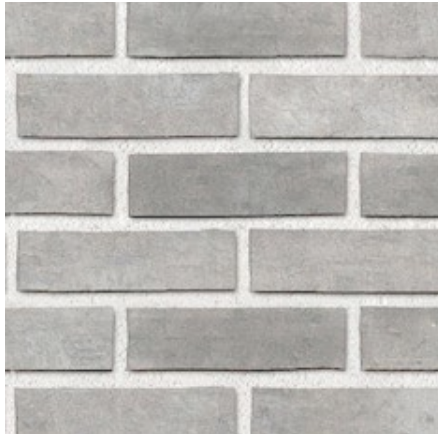


4. METAL WINDOW



5. RETAIL STOREFRONT BY TENANTS.





1. BRICK - TYPE A



2. METAL WINDOW

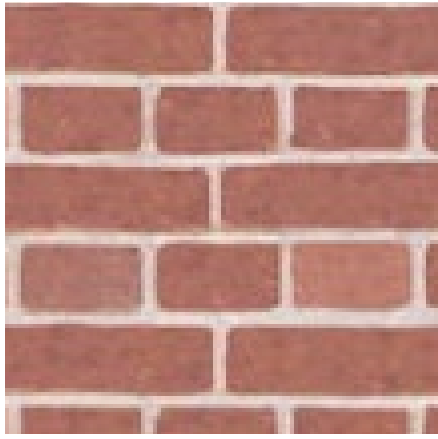


3. RETAIL BASE WITH METAL AWNINGS

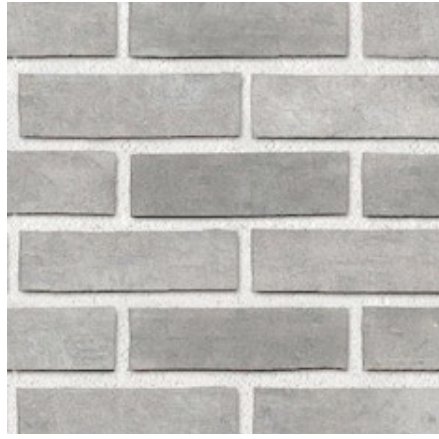


4. METAL PANELS





1. BRICK - TYPE C



2. BRICK - TYPE A



3. STONE PODIUM



4. METAL PANELS



5. STONE RETAIL BASE



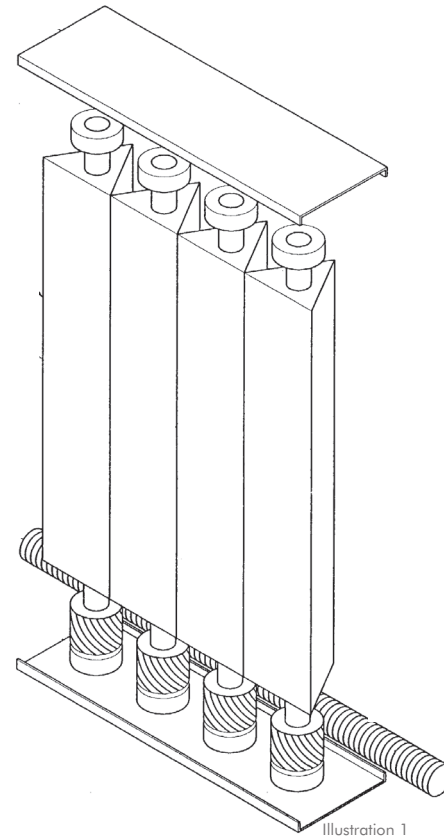
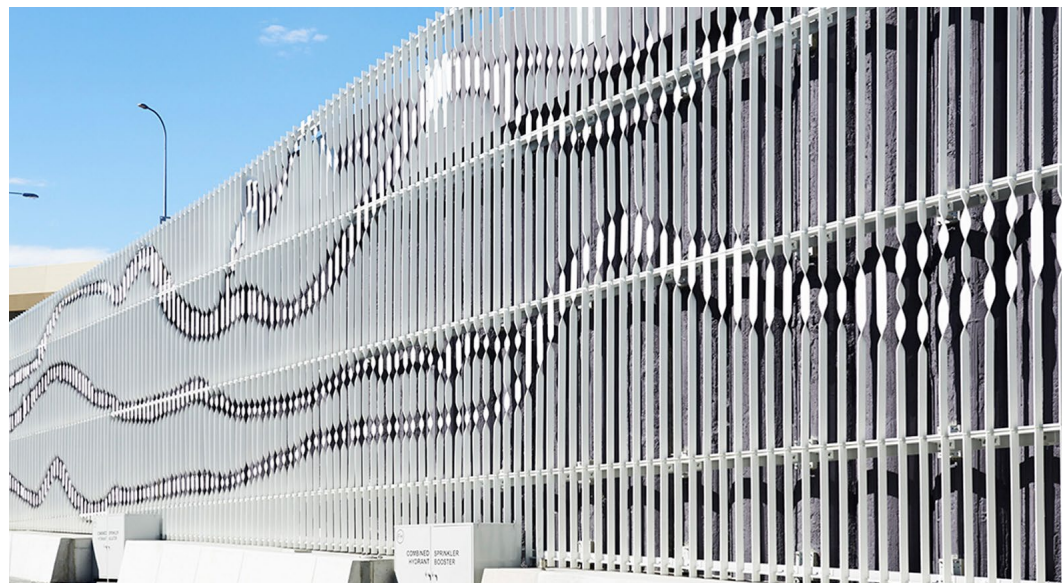
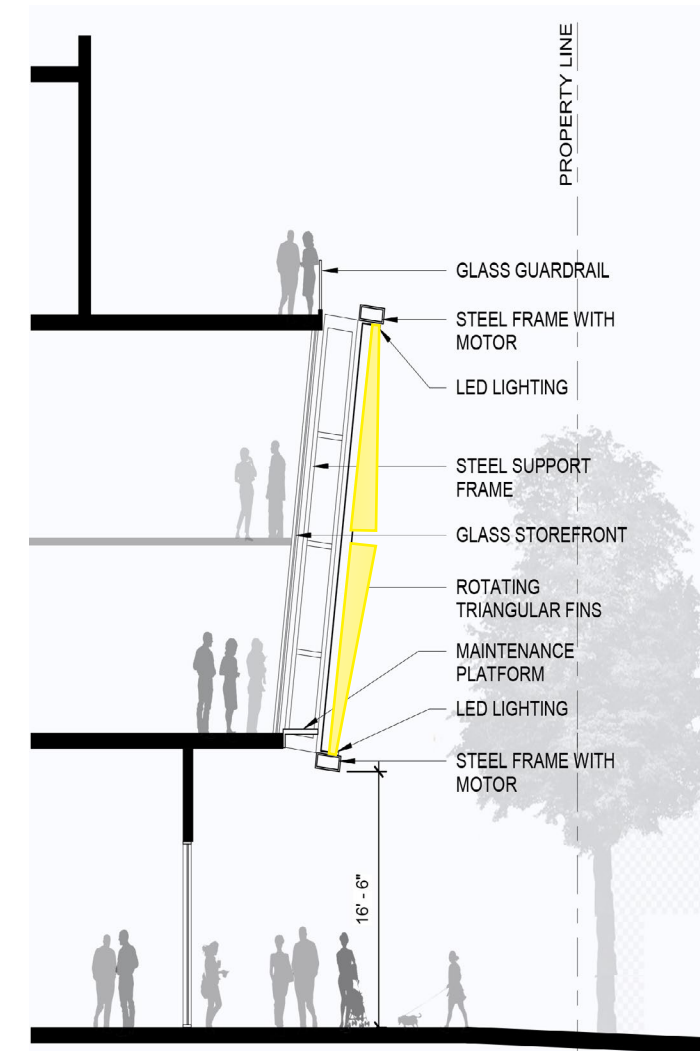


Illustration 1

KINETIC FACADE

along South Dakota Avenue NE

The kinetic façade is made of an array of vertical triangular tubes that rotate on programmed intervals as shown in illustration 1. The kinetic façade will be works of art, commissioned by the Foundation.



FACADE DETAILS - KINETIC FACADE SECTION
ART PLACE AT FORT TOTTEN